



Introducing the new
CROSS S1 FLY RODS

LOOP PRODUCTS 2012

NOTE! For distributors and retailers only.
Not to be distributed or reprinted.
Updated April 19, 2012



LEED



FLY REELS





OPTi SERIES



description

V-shaped spool for better and easier line retrieve. Inset handle and bigger diameter for faster retrieve. A drag system that goes from silky-smooth to trainstopper.

technical specifications

- Designed in Sweden and built with specifically designed components crafted in Sweden.
- Housing and spool machined from one piece aircraft aluminium.
- Components in stainless steel and anodised aluminium.
- Waterproof and salt tolerant.
- Power Matrix Drag System. Axial function employing dual plates. New, unique braking material from Carbon Matrix precision machined to a tolerance of $\pm 0,02$ mm. Extreme temperature and pressure tolerant.
- Simple, quick spool-change.
- Easy-grip progressive brake knob.
- V-shaped spool.
- Precisely counterbalanced.
- Available as left- or right hand-wind.

models

REEL MODEL	ITEM NO.	CAPACITY yd/lb	ARBOR DIA.	OUTER DIA.	INNER WIDTH	WEIGHT
CREEK	OCRB	WF3+140/20	44mm	85mm	20mm	120g
DRYFLY	ODFB	WF5+190/20	56mm	102mm	20mm	135g
RUNNER	ORUB	WF7+150/30	70mm	115mm	25mm	205g
SPEEDRUNNER	OSPB	WF8+185/30	86mm	131mm	25mm	216g
MEGALOOP	OMLB	WF10 + 250/50	68mm	131mm	32mm	257g
BIG	OBGB	WF12 + 350/50	58mm	126mm	38mm	428g

SPOOL MODEL	ITEM NO.
CREEK	OCRB-X
DRYFLY	ODFB-X
RUNNER	ORUB-X
SPEEDRUNNER	OSPB-X
MEGALOOP	OMLB-X
BIG	OBGB-X





EVOTEC G4 SERIES



description

Equipped with an ergonomically designed, non-friction winding handle, which prevents the fly line from getting entangled on it. The Power Matrix drag system is smooth and strong. A real workhorse. Now black anodized.

technical specifications

- Designed in Sweden and built with specifically designed components crafted in Sweden.
- Housing and spool machined from one piece aircraft aluminium.
- Components in stainless steel and anodised aluminium.
- Waterproof and salt tolerant.
- Power Matrix Drag System. Axial function employing dual plates. New, unique braking material from Carbon Matrix precision machined to a tolerance of $\pm 0,02$ mm. Extreme temperature and pressure tolerant.
- Simple, quick spool-change.
- Easy-grip progressive brake knob.
- Weighted overrun prevention.
- Outgoing click (not available on FW).
- Precisely counterbalanced.
- Available as left- or right hand-wind.

models

REEL MODEL	ITEM NO.	CAPACITY yd/lb	ARBOR DIA	OUTER DIA	INNER WIDTH	WEIGHT
FW 3/5	G4B-FW3-5	WF4+170/20	55mm	87mm	27.5mm	138g
FW 4/6	G4B-FW4-6	WF5+200/20	50mm	87mm	27.5mm	140g
FW 5/7	G4B-FW5-7	WF6+230/20	47mm	87mm	27.5mm	140g
LW 5/8	G4B-LW5-8	WF7+220/20	69mm	97mm	35.5mm	180g
LW 6/8	G4B-LW6-8	WF7+250/20	61mm	97mm	35.5mm	225g
LW 7/9	G4B-LW7-9	WF8+250/20	53mm	97mm	35.5mm	225g
HD 8/10	G4B-HD8-10	WF9+200/30	70mm	111mm	35.5mm	247g
HD 9/13	G4B-HD9-13	WF11+220/30	59mm	111mm	35.5mm	247g

SPOOL MODEL	ITEM NO.
FW 3/5	G4B-FW3-5X
FW 4/6	G4B-FW4-6X
FW 5/7	G4B-FW5-7X
LW 5/8	G4B-LW5-8X
LW 6/8	G4B-LW6-8X
LW 7/9	G4B-LW7-9X
HD 8/10	G4B-HD8-10X
HD 9/13	G4B-HD9-13X





CLASSIC SERIES



description

Classic looks with the ultra-modern Power Matrix Drag System. A completely waterproof drag system with a pronounced click sound. Completely corrosion resistant and benefits from a new ergonomic handle design with integrated leader retainer on the counterbalance.

NOTE! All models now with ventilated sideplates.

technical specifications

- Designed in Sweden and built with specifically designed components crafted in Sweden.
- Housing and spool machined from one piece aircraft aluminum.
- Waterproof and salt tolerant.
- Components in stainless steel and anodised aluminium.
- All screws secured with Loc-Tite.
- Power Matrix Drag System. Axial function employing dual plates. New, unique braking material from Carbon Matrix precision machined to a tolerance of $\pm 0,02$ mm. Extreme temperature and pressure tolerant (model 46 with adjustable click drag).
- Easy-grip progressive brake knob.
- Classic click independent of braking system.
- Precisely counterbalanced.
- Available as left- or right hand-wind.

models

MODEL	ITEM NO.	CAPACITY yd/lb	ARBOR DIA	OUTER DIA	INNER WIDTH	WEIGHT
46	CR4-6	WF5+120/20	27mm	83mm	21mm	192g
58	CR5-8	WF7+230/20	27mm	90mm	29mm	218g
79	CR7-9	WF8F+200/30	33mm	95mm	60mm	338g
811	CR8-11	WF10F+220/30	33mm	100mm	65mm	345g
1013	CR10-13	WF12F+350/30	33mm	105mm	65mm	360g

testimonial

Written by Elín Ólafsdóttir Thursday, 11 March 2010

Some years back I bought from Christer Sjöberg at LOOP some of their first LOOP Classic 10/13 reel they made, for 15 foot rod line 10. This reel I have been using ever since for big salmon rivers mainly in Russia and Norway. After a good few years this reel is still going strong and travelling with me where ever I go for big Salmon, this reel have recorded 160 salmon over 20 pounds, 18 salmon over 30 pounds and 4 salmon over 40 pounds. Amazingly I never had problem giving the reel a hard time fighting all this strong fish and I am not a delicate man when it comes to tackle, all I have done is renewing the brakes one time and it is like new. You can trust this machine!

Published with kind permission from Lax-å Angling Club



MULTI SERIES



description

Completely waterproof diecast reel with the same Power Matrix Drag System as in our other machined reels.

technical specifications

- As with our Opti series of reels, the handle is positioned more towards the center of the spool, which allows faster line retrieve and more room when hand palming is desired.
- The counter balance incorporates a leader holder.
- The drag knob has been reset, so it does not catch your fly line while making a cast.
- Spool designed with a V-Shape for optimal fly line spooling.
- Conical shaped rubber handle that allows fly line to easily slip off and not get tangled in.
- Workhorse design that will not let you down in the heat of the battle, regardless of your catch.
- Designed in Sweden and built with specifically designed components crafted in Sweden.
- Available as left- or right hand wind.

models

REEL MODEL	ITEM NO.	CAPACITY yd/lb	ARBOR DIA	OUTER DIA	WIDTH	WEIGHT
3/6 light	LOOPML3-6	WF5+100/20	47mm	85mm	28mm	131g
6/9	LOOPM6-9	WF7+160/30	56mm	98mm	39mm	260g
9/12	LOOPM9-12	WF10+230/30	64mm	114mm	39mm	295g

SPOOL MODEL	ITEM NO.
3/6 light	LOOPML3-6LX
6/9	LOOPM6-9X
9/12	LOOPM9-12X





XACT SERIES



description

The Xact is the improved version of Evotec CLW. Made from composite, except the reel foot, handle and drag knob, that is aluminium. This reel is simply made for tough conditions.

technical specifications

- Water- and heat-resistant casing and brake system.
- Functions equally well wet or dry, warm or cold, under light or heavy drag pressure.
- Form and friction stable brake discs in metal/ teflon (model 25) and metal/ carbon (models 58 and 812).
- Reel frame and spool in corrosion proof composite.
- Large brake adjustment dial.
- Wide braking range (min/max 330°).
- Simple spool change.
- Available as left- or right hand-wind.

models

REEL MODEL	ITEM NO.	CAPACITY yd/lb	ARBOR DIA	OUTER DIA	WIDTH	WEIGHT
XACT 26	XACT2-6	WF5 + 120/20	53mm	84mm	48mm	138g
XACT 58	XACT5-8	WF7 + 180/20	61mm	96mm	49mm	167g
XACT 812	XACT8-12	WF10F+290/30	61mm	112mm	50mm	191g

SPOOL MODEL	ITEM NO.
XACT 26	XACT2-6X
XACT 58	XACT5-8X
XACT 812	XACT8-12X



FLY RODS

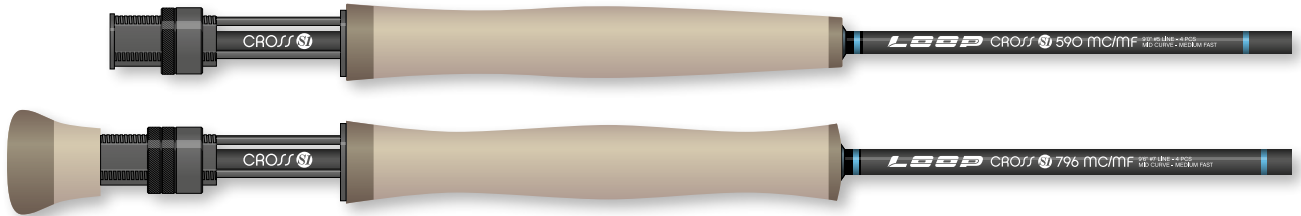


NEW!

FLY RODS



CROSS S1 SERIES



description



The new Loop Cross S1 fly rod series is the single most important revolution to occur in fly fishing since we introduced the large arbor reel over 20 years ago. It's that big.

If the large arbor provided revolutionary function that made the fly reel exponentially better, you won't believe the difference Cross S1 construction makes with fly rods. We could write an entire book on the adventure that has led to the Cross S1 series of fly rods. We could look up and write down all the available superlatives that are yet unused by other manufacturers (not many left nowadays), but the only way to truly describe what we mean is to hand one to you and let you test for yourself. If there has ever been a time in our history of development of high-performance fly fishing gear where Loop merited a "look" and a test from the fly fishing world, it is now.

Over a period of two years we have developed these fly rods where we used the new 3M™ Powerlux™ Composites. The result is amazing, the strength associated with the 3M™ Powerlux™ Composites generates a lightness and controllable elasticity that just must be experienced.

We have carefully restricted the inherent elasticity of the Loop Cross S1 so that the rod is working evenly over a much wider range than other fly rods. We have managed to make super-strong featherweight fly rods, with an emphasis on fishing where the rod is working with minimum vibration through an entire load range – from close-in and out to even extreme distances. The design requires minimal input power where the rod does the job. It has never been so easy and taken so little effort to deliver precision loops at 10-meters or 30-meters while easily controlling the line or changing the pace of the cast.

Cross S1 will be available in March 2012.

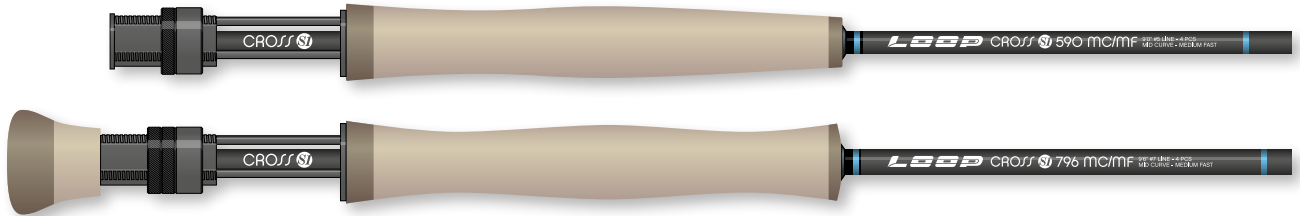
3M and Powerlux are trademarks of 3M Company.

NEW!

FLY RODS



CROSS S1 SERIES



technical description

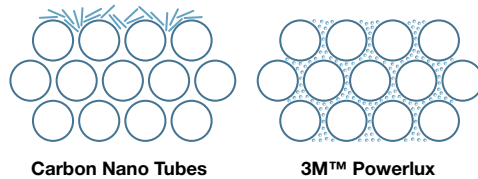


3M Company's Powerlux™ Composites feature a revolutionary technology that transforms how carbon fiber materials perform. This breakthrough is enabled by 3M's unique ability to formulate resin systems with high concentrations of spherical nano-sized silica particles. Because the particles are so small, they are able to flow between individual filaments of carbon fiber, providing a dense matrix of strength throughout the entire composite. The resulting material enables designers to develop rods that are not only incredibly strong and durable, but also lighter in weight and more sensitive.

Standard composite materials have lower resin stiffness and are prone to cracking or buckling under the stresses a rod sees during a good day of fishing. The more nanoparticles the resin contains, the higher the crack resistance and overall rod toughness. The Powerlux™ composite material contains an astonishing 40 percent of nanoparticles uniformly dispersed and densely packed throughout the resin.

While other companies have reported adding nano technology to their composite materials, none have been successful at adding more than single-digit percentages. Carbon nano tubes, for example, have a high length-to-width ratio of 15:1, so they are not able to disperse uniformly throughout the carbon fibers as shown in figure below.

3M™ Powerlux™ is truly a game changer that bends the rules of carbon fiber composites. The tiny, spherical nanoparticles create such a strong bond between the carbon fibers that rod stress is more evenly dissipated, leading to a significantly stronger, more durable and more flexible rod. By improving strength and sensitivity, 3M™ Powerlux™ gives you performance when it counts.



Carbon Nano Tubes **3M™ Powerlux**

FIG. CAPTION: Other nano technologies, like carbon nano tubes, cannot filter between carbon fibers due to their higher length-to-width ratio of 15:1. 3M™ Powerlux™ spherical nanoparticles have a 1:1 length-to-width ratio, uniquely allowing for more than 40 percent of nanoparticles to be uniformly dispersed.

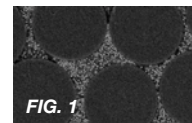


FIG. 1

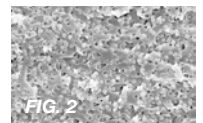


FIG. 2

FIG. 1 CAPTION: Getting more nanoparticles between each carbon fiber is the key to the performance enhancements of 3MTM Powerlux™ Composites.

FIG. 2 CAPTION: This SEM image shows the rough, three-dimensional surface area that occurs when a 3MTM Powerlux™ Composite is stressed. The exceptional bond between the particle and the resin significantly hinders cracks from spreading. The result: tougher, stronger rods.



CROSS S1 SERIES

rod specifications

- Blank in aesthetic matte smoke finish.
- High-grade cork handle with Cork mix reinforcements.
- Triangular 3-pin aluminum reel seat in Gun Metal finish.
- REC RSG Recoil stripping guides. Extra strong in Black Pearl finish.
- REC RSNX Recoil snake guides. Extra strong in Black Pearl finish.
- Delivered in matching Gun Metal aluminum tube and cloth bag.

models

MODEL	ITEM NO.	LENGTH	LINE	CURVE	TEMPO	PCS
SINGLE-HAND						
386-4 MC/MF	CR0386-4MF	8'6"	#3	MC	MF	4
490-4 MC/MF	CR0386-4MF	9'0"	#4	MC	MF	4
590-4 MC/MF	CR0386-4MF	9'0"	#5	MC	MF	4
690-4 MC/MF	CR0690-4MF	9'0"	#6	MC	MF	4
796-4 MC/MF	CR0796-4MF	9'6"	#7	MC	MF	4
7107-4 MC/MF	CROSW7107-4MF	10'7"	#7	MC	MF	4
FLATSMAN (SALTWATER MODELS)						
890-4 MC/MF	CR0F890-4MF	9'0"	#8	MC	MF	4
1090-4 MC/MF	CR0F1090-4MF	9'0"	#10	MC	MF	4
1290-4 MC/MF	CR0F1290-4MF	9'0"	#12	MC	MF	4
DOUBLE-HAND						
7120-4 MC/MF	CR07120-4MF	12'0"	#7	MC	MF	4
9140-4 MC/MF	CR09140-4MF	14'0"	#9	MC	MF	4

testimonial

Dear Christer and the Loop team,

I wanted to send you a line to thank you for the opportunity to test your new invention in double handed rods, the Cross S1 12 foot line 7. Loop has made many great rods in the past, but with this one I believe you have raised the bar yet again! I fished with it on the Stora Laxa river which is a medium size salmon river in Iceland. The rod is extremely light and I found myself occasionally, almost by accident, using it as

a single hand rod! The rod was very accurate on smaller and medium sized casts and had lots of power that I could not even use as I was not fishing a big enough river. So all in all I believe you have created a rod that is suitable for smaller and medium size rivers where you need to be very accurate and precise in your casting, as well as for long distance powerful casting as there is so much power and strength built in to this light rod. One thing I enjoyed very much as Iceland is all about technical fishing was using the 12 foot 7 rod for the riffing hitch. The rods low weight makes it super-easy to lift high and strip the line fast to create the v-shape of the water with the hitched fly. Having a light rod like this is an enormous help when fishing sensitive waters which require lots of technique. The rod really helps you to create power, which means you don't have to work so hard yourself, so at the end of the day you don't feel tired at all. This rod fights fish very well and tire them out quickly which is very important when you are practicing catch and release. I can't wait to get my hands on some more models of these new Cross S1 rods!

Arni Baldursson





OPTi CREEK SERIES



description

The Opti Creek has been optimised for sensitive fishing on small water. If you are looking for the ultimate rod for small technical water, then get Optimised with the Opti Creek. Because on these waters there are no second chances.

technical specifications

- Triangular reel-seat with a permanent lock – easier to put the reel in place. Form follows function.
- Durable snake-guides with double coating.
- Rod model marked on each rod section.
- Dot marks on ferrules for correct fit of each rod section.
- Comes in cloth bag and pentagon shaped cordura tube.

models

MODEL	ITEM NO.	LENGTH	LINE	ACTION TEMPO	ACTION CURVE	WEIGHT ROD	PCS
388-4	OPCR388-4A	8'8"	#3	MF	MC	91g	4

OPTi PEAK SERIES



description

The Opti Peak, with its length and sensitive tip, is the optimal choice for Czech Nymphing. It has also the backbone to handle big fish on a light line.

technical specifications

- Triangular reel-seat with a permanent lock – easier to put the reel in place. Form follows function.
- Small fightingbutt and optional counterweight for lightweight reels.
- Durable snake-guides with double coating.
- Rod model marked on each rod section.
- Dot marks on ferrules for correct fit of each rod section.
- Comes in cloth bag and pentagon shaped cordura tube.

models

MODEL	ITEM NO.	LENGTH	LINE	ACTION TEMPO	ACTION CURVE	WEIGHT ROD	PCS
4110-4	OPPE4110-4A	11'0"	#4	MF	MC	121g	4



OPTi STREAM SERIES



description

On the Opti Stream we have prioritised mobility. This rod have the flexibility to cope with all casting elements. Using the underhand-cast you can place the line were you want it without any delay. The Opti Stream handle the situation when you need an accurate presentation.

technical specifications

- Triangular reel-seat with a permanent lock – easier to put the reel in place. Form follows function.
- Durable snake-guides with double coating.
- Rod model marked on each rod section.
- Dot marks on ferrules for correct fit of each rod section.
- Comes in cloth bag and pentagon shaped cordura tube.

models

MODEL	ITEM NO.	LENGTH	LINE	ACTION TEMPO	ACTION CURVE	WEIGHT ROD	PCS
590-4	OPST590-4A	9'0"	#5	MF	MC	95g	4

OPTi RIVER SERIES



description

A 5-piece 7-weight rod developed for salmon and seatrout fishing in flowing water. It's deep action makes it perfect for long underhand casts in tight spots. As for overhand casting you'll be amazed by the power in this rod. Made with Cross Weave technology it is as durable as it gets.

technical specifications

- Built with the durable Cross Weave technology.
- Hexagonal X-Grip handle.
- Optional counterweight for lightweight reels.
- Triangular reel-seat with a permanent lock – easier to put the reel in place. Form follows function.
- Durable snake-guides with double coating.
- Rod model marked on each rod section.
- Dot marks on ferrules for correct fit of each rod section.
- Comes in cloth bag and pentagon shaped cordura tube.

models

MODEL	ITEM NO.	LENGTH	LINE	ACTION TEMPO	ACTION CURVE	WEIGHT ROD	PCS
798-5	OPR798-5AX	9'8"	#7	MF	FC	126g	5



OPTi COAST SERIES



description

The Opti Coast was designed to handle the windy conditions found on the coast. With a strong, crisp and quick action the rod will cut through the wind and allow you to reach those hard to get to rips. Looking for tight loops in the wind? Then the Opti Coast is the rod for you. It comes with the hexagonal X-grip handle and is built with the new durable cross weave technology.

technical specifications

- Built with the durable Cross Weave technology.
- Hexagonal X-Grip handle in cork-mix.
- Triangular reel-seat with a permanent lock – easier to put the reel in place. Form follows function.
- Optional counterweight for lightweight reels.
- Durable snake-guides with double coating.
- Rod model marked on each rod section.
- Dot marks on ferrules for correct fit of each rod section.
- Comes in cloth bag and pentagon shaped cordura tube.

models

MODEL	ITEM NO.	LENGTH	LINE	ACTION TEMPO	ACTION CURVE	WEIGHT ROD	PCS
693-4	OPC0693-4A	9'3"	#6	F	TC	153g	4
796-4	OPC0796-4A	9'6"	#7	F	MC	155g	4



OPTi POWER SPEY DOUBLE-HAND SERIES



description

After a year of testing sample after sample we are finally pleased to introduce the brand new Opti Power Spey. These rods work equally well with short heads (typical for Underhand and Skagit casting) or longer spey lines. The tip recovery is extremely precise and the butt power never gives up.

The models feature our new patented Balanced reel seat, which is 50 % longer than traditional reel seats and allows the angler to choose position of the reel, balancing the rod against the weight of the line and the casting technique.

technical specifications

- Balanced reel seat with adjustable reel position. Form follows function.
- Durable snake-guides with double coating.
- Rod model marked on each rod section.
- Dot marks on ferrules for correct fit of each rod section.
- Comes in cloth bag and pentagon shaped cordura tube.

models

MODEL	ITEM NO.	LENGTH	LINE	ACTION TEMPO	ACTION CURVE	WEIGHT ROD	PCS
9130-5	CLASS2-9130-5A	13'0"	#9-10	MF+	MC	259g	5
9140-5	CLASS2-9140-5A	14'0"	#9-10	MF+	MC	289g	5
10150-5	CLASS2-10150-5A	15'0"	#10-11	MF+	MC	321g	5



EVOTEC SERIES



NOTE! Available with optional hexagonal X-Grip and traditional round handle in cork-mix.



description

Made with our latest technology, Cross Weave, the Evotec series have a sweet, precise and wonderfully balanced action. Minimal vibrations and the possibility to change tempo with ease is the fruit of our "Perfect Curve" philosophy. With a handle in epoxy-cork mix you also get the best grip available. Available with the revolutionary X-Grip handles to further increase stability and fine-tune the fishing experience.

technical specifications

- Built with Cross Weave technology for maximum durability.
- Available with optional hexagonal X-Grip and traditional round handle in cork-mix.
- Durable chrome snake-guides with double coating.
- Rod model marked on each rod section.
- Dot marks on ferrules for correct fit of each rod section.
- Comes in cloth bag and pentagon shaped cordura tube.

models

MODEL	ITEM NO.	LENGTH	LINE	ACTION TEMPO	ACTION CURVE	WEIGHT ROD	PCS
390-3 MF	EV0390-3MF	9'0"	#3	MF	FC	99g	3
490-3 MF	EV0490-3MF	9'0"	#4	MF	FC	101g	3
590-4 M	EV0590-4M	9'0"	#5	M	MC	107g	4
590-3 MF	EV0590-3MF	9'0"	#5	MF	MC	107g	3
590-3 F	EV0590-3F	9'0"	#5	F	TC	113g	3
690-3 MF	EV0690-3MF	9'0"	#6	MF	MC	111g	3
690-3 F	EV0690-3F	9'0"	#6	F	TC	110g	3
696-4 MF	EV0696-4MF	9'6"	#6	MF	TC	126g	4
796-3 MF	EV0796-3MF	9'6"	#7	MF	MC	127g	3
8100-3 MF	EV08100-3MF	10'0"	#8	MF	MC	138g	3

testimonial

Hey guys!

That new rod series of yours, The Evotec, is a real blast! It's long-casting and there is very little residual vibration - even when you punch it! I've been using the Evotec 12' quite a lot this summer and can only say that it is a joy to cast. It's taken a couple of grilse and a 15lb Salmon and worked flawlessly. The new rod-handle material is really good. Feels a bit like velvet and is very comfortable. The new shape of the handles, especially on the single-hand models, makes the rod "fit like a glove" without one holding the handle in a vice-like grip. Especially after a few hours of hard fishing you really notice the benefits of these handles. I've gotten the same positive reaction from friends of mine who are totally sold on the whole concept, both shape and material. It's great that you continue to come up with new, inventive gear that is also functional!

Dan Rotter



EVOTEC DOUBLE-HAND SERIES



description

Made with our latest technology, Cross Weave, the Evotec series have a sweet, precise and wonderfully balanced action. Minimal vibrations and the possibility to change tempo with ease is the fruit of our "Perfect Curve" philosophy. With a handle in epoxy-cork mix you also get the best grip available.

technical specifications

- Built with Cross Weave technology for maximum durability.
- Quad-Grip handle in cork-mix.
- Triangular reel-seat with a permanent lock – easier to put the reel in place. Form follows function.
- Durable chrome snake-guides with double coating.
- Rod model marked on each rod section.
- Dot marks on ferrules for correct fit of each rod section.
- Comes in cloth bag and pentagon shaped cordura tube.
- The patented Balanced reel seat on models 9140 and 10150.

models

MODEL	ITEM NO.	LENGTH	LINE	ACTION TEMPO	ACTION CURVE	BALANCED REEL SEAT	WEIGHT ROD	PCS
6126-4 MF	EV06126-4MF	12'6"	#6	MF	MC	-	272g	4
7130-4 MF	EV07130-4MF	13'0"	#7	MF	MC	-	280g	4
8120-4 MF	EV08120-4MF	12'0"	#8	MF	TC	-	255g	4
8136-4 MF	EV08136-4MF	13'6"	#8	MF	MC	-	283g	4
8136-4 F	EV08136-4F	13'6"	#8	F	MC	-	297g	4
9140-4 MF	EV09140-4MF	14'0"	#9	MF	MC	X	306g	4
9140-4 F	EV09140-4F	14'0"	#9	F	TC	X	328g	4
10150-4 MF	EV010150-4MF	15'0"	#10	MF	MC	X	340g	4
10150-4 F	EV010150-4F	15'0"	#10	F	TC	X	358g	4

testimonial

Hey guys!

That new rod series of yours, The Evotec, is a real blast! It's long-casting and there is very little residual vibration - even when you punch it! I've been using the Evotec 12' quite a lot this summer and can only say that it is a joy to cast. It's taken a couple of grilse and a 15lb Salmon and worked flawlessly. The new rod-handle material is really good. Feels a bit like velvet and is very comfortable. The new shape of the handles, especially on the single-hand models, makes the rod "fit like a glove" without one holding the handle in a vice-like grip. Especially after a few hours of hard fishing you really notice the benefits of these handles. I've gotten the same positive reaction from friends of mine who are totally sold on the whole concept, both shape and material. It's great that you continue to come up with new, inventive gear that is also functional!

Dan Rotter



GÖRAN ANDERSSON SIGNATURE SERIES



description

“For many years I’ve been asked to make rods under my signature and finally these are available after long and arduous designing, testing, redesigning and retesting. They are manufactured in the same fibre and with the same technology as the Grey Line Series, but with a character all their own. These rods have a bit deeper action that works through the entire grip when fully loaded, but also have a short recovery that allows for a quick and early stop. They are easy-to-cast and meant for all flyfishers, but will at the same time give the technically competent caster the ability to push the envelope and achieve more than any other rods available. I hope you will experience the same enjoyment and satisfaction from the Signature Series.”

Göran Andersson
Rod Designer

technical specifications

- Triangular reel-seat with a permanent lock – easier to put the reel in place. Form follows function.
- Optional counterweight for lightweight reels (from line #7, single-hand rods).
- Durable snake-guides with double coating.
- Rod model marked on each rod section.
- Dot marks on ferrules for correct fit of each rod section.
- Comes in cloth bag and pentagon shaped cordura tube.

models

MODEL	ITEM NO.	LENGTH	LINE	ACTION TEMPO	ACTION CURVE	WEIGHT ROD	PCS
SINGLE-HAND							
494-4	GASS494-4A	9'4"	#4	MF	FC	94g	4
7100-4	GASS7100-4A	10'0"	#7	MF	MC	116g	4
DOUBLE-HAND							
6120-4	GASS6120-4A	12'0"	#6	MF	TC	180g	4
8140-4	GASS8140-4A	14'0"	#8	MF	TC	221g	4
9116-4	GASS9116-4A	11'6"	#9	MF	MC	181g	4
9126-4	GASS9126-4A	12'6"	#9	MF	FC	210g	4
10146-4	GASS10146-4A	14'6"	#10	MF	TC	253g	4



XACT SERIES



description

Our new Xact series has a smooth, deep, medium-fast action that is both forgiving and precise. This is no entry-level stick and represents a hell of a lot of rod for the money. All the technology, style and feeling at a realistic price.

technical specifications

- Traditional shape handle in cork-mix.
- Triangular reel-seat with a permanent lock – easier to put the reel in place. Form follows function.
- Durable chrome snake-guides with double coating.
- Rod model marked on each rod section.
- Dot marks on ferrules for correct fit of each rod section.
- Comes in cloth bag and cordura tube.

models

MODEL	ITEM NO.	LENGTH	LINE	ACTION TEMPO	ACTION CURVE	WEIGHT ROD	PCS
490-4 MF	XACT2-490-4MF	9'0"	#4	MF	FC	85g	4
590-4 MF	XACT2-590-4MF	9'0"	#5	MF	MC	90g	4
690-4 MF	XACT2-690-4MF	9'0"	#6	MF	FC	93g	4
790-4 MF	XACT2-790-4MF	9'0"	#7	M	FC	103g	4
890-4 MF	XACT2-890-4MF	9'0"	#8	MF	FC	105g	4

MODEL	ITEM NO.	LENGTH	LINE	ACTION TEMPO	ACTION CURVE	WEIGHT ROD	PCS
6126-4 MF	XACT2-6126-4MF	12'6"	#6	MF	MC	237g	4
7130-4 MF	XACT2-7130-4MF	13'0"	#7	MF	MC	242g	4
8126-4 MF	XACT2-8126-4MF	12'6"	#8	MF	MC	242g	4
8136-4 MF	XACT2-8136-4MF	13'6"	#8	MF	MC	279g	4
9140-4 MF	XACT2-9140-4MF	14'0"	#9	MF	MC	268g	4
10150-4 MF	XACT2-10150-4MF	15'0"	#10	MF	MC	277g	4



BOOSTER ROD **NEW!**



description

If big toothy critters is the name of your game, the Booster is the rod for you. With a deep progressive action the Booster delivers big flies as easy as nothing. The cork/rubber mix handle gives you a steady grip. Style and attitude included.

technical specifications

- Durable full-wells handle and fighting but in cork-mix.
- Lightweight aluminum reel seat in matte black finish.
- Over-sized snake guides with double coating.
- Rod model marked on each rod section.
- Comes in cloth bag and cordura tube.

models

MODEL	ITEM NO.	LENGTH	LINE	ACTION TEMPO	ACTION CURVE	WEIGHT ROD	PCS
988-3	B988-3A	8'8"	#9	F	FC	144g	3

INCITE KIT



Includes rod, reel, fly line, backing and leader. Delivered "ready-to-go".

- 9' Incite rod #5 rod with XACT reel #2-6 and XACT WF #6 float fly line.
- 9' Incite rod #6 rod with XACT reel #5-8 and XACT WF #7 float fly line.
- 9' Incite rod #7 rod with XACT reel #5-8 and XACT WF #8 float fly line.

ITEM NO.	ROD	REEL	ACTION TEMPO	ACTION CURVE	PCS
iKIT5*	9'0" #5-6	XACT 2/6	MF	MC	3
iKIT6*	9'0" #6-7	XACT 5/8	MF	MC	3
iKIT7*	9'0" #7-8	XACT 5/8	MF	MC	3

FLY LINES





OPTi CREEK WF



description

The Opti Creek line could be deemed the nemesis of vigilant fish. The line is a development of the Opti Stream line and has a somewhat shorter head for better feeling and presentation. You get the advantage over the fish. Not the other way around. The taper is refined for an even better presentation and is suited both for over and underhand-casts. For running water, this is the line you need.

specifications

LINE	ITEM NO.	DENSITY	TAPER LENGTH	TOTAL LENGTH	COLOR
WF3	OCRWF*F	Floating	7.0m	25m	Ivory/ Lemon

OPTi STREAM WF



description

Opti Stream is precisely as the name indicates: for flowing water. The new taper is designed for extreme ease in both underhand and overhand casting. Easy to pickup and shoot overhand and yet perfectly balanced for tight, underhand casts. Head length varies between 8.0-9.5m depending upon line class.

specifications

LINE	ITEM NO.	DENSITY	TAPER LENGTH	TOTAL LENGTH	COLOR
WF4-8	OSWF*F	Floating	8.0-9.5m	28.0-29.5m	Ivory/ Orange

OPTi STILLWATER WF



description

This line is designed for lake fishing. The new taper casts loooooong and is designed to set the fly down with precision at enormous distance! Head length is 10.8m.

specifications

LINE	ITEM NO.	DENSITY	TAPER LENGTH	TOTAL LENGTH	COLOR
WF5-8	OSTWF*F	Floating	10.8m	30m	Ivory/ Lime



OPTi 130 WF **NEW!**



description

OPTi 130 is a true fishing line that delivers the longest casts (as opposed to a tournament line which is not effective to fish with). It is best suited to coast, flatwater and reservoir circumstances. Even with a 13m head, the line can still adapt to underhand and switch casting. One of the many advantages to this taper is the optimized weight distribution which can handle even the heaviest flies. A combination of a specially selected ore and soft yet resilient coating provides a comfortable feel to fish with.

specifications

LINE	ITEM NO.	DENSITY	TAPER LENGTH	TOTAL LENGTH	COLOR
WF5-8	130WF*-F	Floating	13.0m	30m	Ivory/ Peach

OPTi 165 WF



description

OPTi 165 is the line for long distance casting. The long belly and adjusted taper give a fine balance between delicate presentation and very long reach. This line was developed for fishing situations where distance is critical to success.

specifications

LINE	ITEM NO.	DENSITY	TAPER LENGTH	TOTAL LENGTH	COLOR
WF5-8	165WF*-F	Floating	16.5m	33.5m	Ivory/ Fluo Red

OPTi 210 WF



description

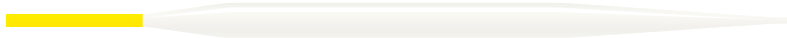
OPTi 210 is based on the same concept as the OPTi 165, but has an even longer belly and corresponding balanced taper. This fly line was developed for the longest possible single-hand casts and maximum distance in both angling and competition situations.

specifications

LINE	ITEM NO.	DENSITY	TAPER LENGTH	TOTAL LENGTH	COLOR
WF5-8	210WF*-F	Floating	21.3m	40m	Ivory/ Fluo Orange



EVOTEC 85 WF



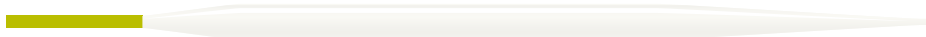
description

Evotec 85 is designed for both over- and underhand casting in tight spaces and at medium distances. With a head length of 8.5 meters and unique compound rear taper, the Evotec 85 delivers maximum technical capability when limited room is a factor.

specifications

LINE	ITEM NO.	DENSITY	TAPER LENGTH	TOTAL LENGTH	COLOR
WF3-7	85WF*F	Floating	8.5m	27.0m	Yellow/ Ivory

EVOTEC 100 WF



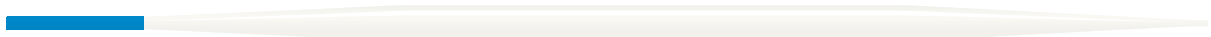
description

Evotec 100 covers everything: over- or underhand, short or long casts. With a 10.4 meter head length and unique compound rear taper, the Evotec 100 is the clear choice for a technical all-round line.

specifications

LINE	ITEM NO.	DENSITY	TAPER LENGTH	TOTAL LENGTH	COLOR
WF3-8	100WF*F	Floating	10.4m	29.0m	Moss Green/ Ivory
WF5-8	100WF*F/I	Float/ Int. Head	10.4m	29.0m	Moss Green/ Dark Olive

EVOTEC 140 WF



description

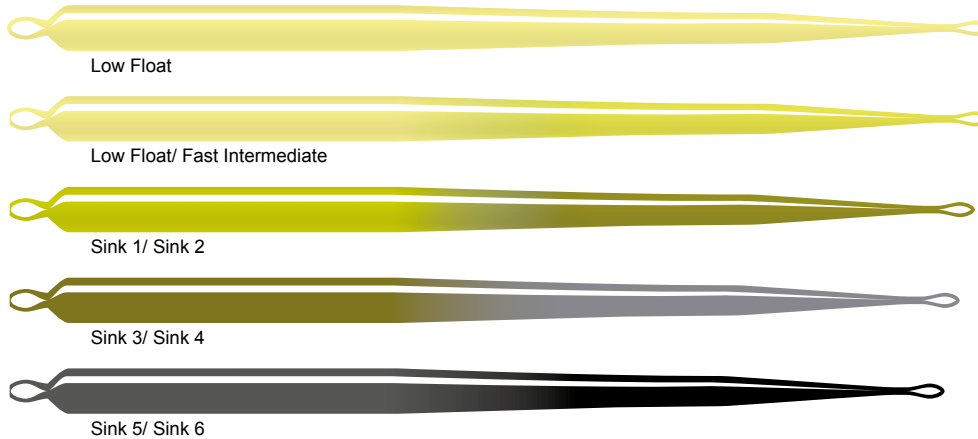
Evotec 140 is designed for both over- and underhand casting everywhere from medium to extreme long distance. With a 14 meter head length, plus a 2-meter back step and unique compound rear taper, the Evotec 140 is the ideal choice for technical casters who want to reach out to the far bank without wading.

specifications

LINE	ITEM NO.	DENSITY	TAPER LENGTH	TOTAL LENGTH	COLOR
WF5-8	140WF*F	Floating	14.0m	30.0m	Blue/ Ivory

NEW!**FLY LINES**

GDC DOUBLE-HAND



PLEASE NOTE. Also available as complete set with five heads in line wallet.

description

GDC (Gradual Density Change) double-hand heads is a well-balanced shooting-head system with integrated loop-eyes at both ends that is ready to connect to both shooting line and leader. The system is flexible, fast and easy to use and is ideally suited to the Scandinavian style of casting.

specifications

#6

LINE	ITEM NO.	HEAD LENGTH	SINK TIP LENGTH	WEIGHT	SINK RATE TIP
Low Float	GDC6F	10.5m	-	24g	-
Low Float/ Fast Int.	GDC6F/FI	10.5m	4m	24g	20 sec/ m
Sink 1/ Sink 2	GDC6S1/2	10.0m	4m	24g	13 sec/ m
Sink 3/ Sink 4	GDC6S3/4	9.5m	4m	24g	7.5 sec/ m
Sink 5/ Sink 6	GDC6S5/6	9.0m	4m	24g	5 sec/ m

#7

LINE	ITEM NO.	HEAD LENGTH	SINK TIP LENGTH	WEIGHT	SINK RATE TIP
Low Float	GDC7F	10.5m	-	27g	-
Low Float/ Fast Int.	GDC7F/FI	10.5m	4m	27g	20 sec/ m
Sink 1/ Sink 2	GDC7S1/2	10.0m	4m	27g	13 sec/ m
Sink 3/ Sink 4	GDC7S3/4	9.5m	4m	27g	7.5 sec/ m
Sink 5/ Sink 6	GDC7S5/6	9.0m	4m	27g	5 sec/ m

#8

LINE	ITEM NO.	HEAD LENGTH	SINK TIP LENGTH	WEIGHT	SINK RATE TIP
Low Float	GDC8F	11.0m	-	31g	-
Low Float/ Fast Int.	GDC8F/FI	11.0m	4m	31g	20 sec/ m
Sink 1/ Sink 2	GDC8S1/2	10.5m	4m	31g	13 sec/ m
Sink 3/ Sink 4	GDC8S3/4	10.0m	4m	31g	7.5 sec/ m
Sink 5/ Sink 6	GDC8S5/6	9.5m	4m	31g	5 sec/ m

#9

LINE	ITEM NO.	HEAD LENGTH	SINK TIP LENGTH	WEIGHT	SINK RATE TIP
Low Float	GDC9F	12.0m	-	36g	-
Low Float/ Fast Int.	GDC9F/FI	12.0m	4m	36g	20 sec/ m
Sink 1/ Sink 2	GDC9S1/2	11.5m	4m	36g	13 sec/ m
Sink 3/ Sink 4	GDC9S3/4	11.0m	4m	36g	7.5 sec/ m
Sink 5/ Sink 6	GDC9S5/6	10.5m	4m	36g	5 sec/ m

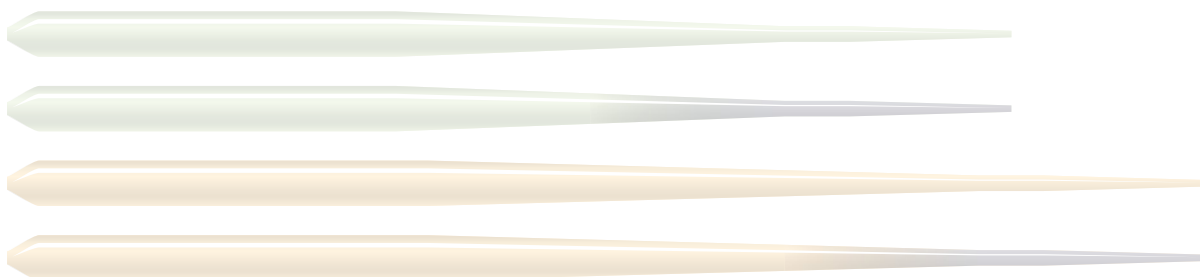
#10

LINE	ITEM NO.	HEAD LENGTH	SINK TIP LENGTH	WEIGHT	SINK RATE TIP
Low Float	GDC10F	12.5m	-	40g	-
Low Float/ Fast Int.	GDC10F/FI	12.5m	4m	40g	20 sec/ m
Sink 1/ Sink 2	GDC10S1/S2	11.5m	4m	40g	13 sec/ m
Sink 3/ Sink 4	GDC10S3/S4	11.0m	4m	40g	7.5 sec/ m
Sink 5/ Sink 6	GDC10S5/S6	10.5m	4m	40g	5 sec/ m

IMPORTANT! Minor adjustments on line lengths and weights may occur on the final lines.



CUSTOM 155/ 185 DOUBLE-HAND SHOOTING HEADS **NEW!**



description

The Custom 155/ 185 is constructed for those who want to customize to their own weight/ length and add their own loops. The design comes from a tournament line that has been adapted for fishing. This unique taper is constructed so that the majority of weight is located in the rear section of the line. The result is a sweet turnover transfer that makes for easy un-derhand casting with a longer head than normal.

specifications

DENSITY	ITEM NO.	FOR ROD	OVERALL LENGTH	FRONT TAPER	WEIGHT	COLOR
Floating	CU155F	12'0"-15'0"	15.5m	9.5m	44g	Peppermint
Float/ Interm.	CU155F/I	12'0"-15'0"	15.5m	9.5m	44g	Peppermint/ Light Grey
Floating	CU185F	14'0"-17'0"	18.5m	12.0m	53g	Creme
Float/ Interm.	CU185F/I	14'0"-17'0"	18.5m	12.0m	53g	Creme/ Light Grey

BOOSTER SINGLE-HAND WF **NEW!**



description

BIG FLIES, BIG FISH! Featuring a short front taper and a superb weight distribution, the Booster turns over "biggies" with ease. This for sure is a line for big nasties, be it fish or fly.

specifications

DENSITY	ITEM NO.	LINE	HEAD LENGTH	HEAD WEIGHT	TOTAL LENGTH	COLOR
Float	B9F	WF9	10.1m	22g	28m	Light Purple
Float/ Intermediate	B9F/I	WF9	10.1m	22g	28m	Light Purple/ Purple

XACT SINGLE-HAND WF



description

Xact is a line suitable for all possible fishing situations. It has a traditional weight-forward taper that is easy to cast and matches well to different rods. The Xact is our top recommendation for a great all-round line.

specifications

DENSITY	ITEM NO.	LINE	TAPER LENGTH	TOTAL LENGTH	COLOR
Floating	XWF*F	WF4-8	8.5m	27m	Moss Green



RUNNER LOOPED RUNNINGLINE **NEW!**



description

Floating running line for fishing with shooting heads. It provides the correct resistance for the best control. Integrated 18cm long loop connector for easy change of line. Dacron core.

specifications

DIMENSION	ITEM NO.	LINE	LENGTH	COLOR
Floating 0.029"	LOOPRL29	Heavy Single-Hand/ Light Double-Hand	30m	Blue
Floating 0.032"	LOOPRL32	Normal Double-Hand	30m	Red
Floating 0.035"	LOOPRL35	Heavy Double-Hand	30m	Green

DACRON BACKING LINE **NEW!**



High-quality dacron backing.

ITEM NO.	DIMENSION	LENGTH	COLOR
B50/20	20lbs	50yd	Bright Orange
B2500/20	20lbs	2500yd	Bright Orange
B100/30	30lbs	100yd	Bright Orange
B2500/30	30lbs	2500yd	Bright Orange



TIPPET NYLON MATERIAL

Highest quality IGFA-class nylon material.

ITEM NO.	LENGTH	DIMENSION	TEST
X18050	10m	0.50mm	43lb/ 19.5kg
X18045	15m	0.45mm	35lb/ 16kg
X18040	20m	0.40mm	28.5lb/ 12.9kg
X18035	30m	0.35mm	22.5lb/ 10.2kg
X18032	30m	0.32mm	20lb/ 8.9kg
X18030	30m	0.30mm	17lb/ 7.7kg
X180X	30m	0.28mm	14.5lb/ 6.5kg
X181X	30m	0.26mm	12lb/ 5.5kg
X182X	30m	0.22mm	10lb/ 4.2kg
X183X	30m	0.20mm	8lb/ 3.7kg
X184X	30m	0.18mm	6.5lb/ 3kg
X185X	30m	0.16mm	5lb/ 2.4kg
X186X	30m	0.12mm	3lb/ 1.4kg
X187X	30m	0.10mm	-/-

TROUT NYLON LEADER

Traditional 9' trout nylon leader.

ITEM NO.	LENGTH	TIPPET
LN090X	9'0"	0.28mm
LN091X	9'0"	0.25mm
LN092X	9'0"	0.22mm
LN093X	9'0"	0.20mm
LN094X	9'0"	0.18mm
LN095X	9'0"	0.16mm
LN096X	9'0"	0.14mm

MULTI NYLON LEADER

Nylon leader suited to various casting and fishing situations. Optimal for spey- and underhand cast with single-hand and light double-hand rods.

ITEM NO.	LENGTH	TIPPET
LNMT1	12'0"	0.25mm
LNMT2	13'0"	0.35mm

SALMON NYLON LEADER

Nylon leader suited to various casting and fishing situations. Optimal for spey and underhand cast with double-hand rods.

ITEM NO.	LENGTH	TIPPET
LNL-L	15'0"	0.37mm
LNL	17'0"	0.40mm

TIPPET FLUOROCARBON MATERIAL

Leader material manufactured in the highest quality fluorocarbon. Higher density than nylon guards against abrasion and allows material to sink easier. Nearly invisible in water. **Please note:** Fluorocarbon does not break down when left out in the elements – do not litter!

ITEM NO.	LENGTH	DIMENSION	TEST
X18050	17m	0.55mm	30lb
X18045	17m	0.48mm	25lb
X18040	25m	0.42mm	20lb
X18035	25m	0.38mm	18lb
X18032	25m	0.35mm	15lb
X180X	25m	0.30mm	13.5lb
X181X	25m	0.27mm	12lb
X182X	25m	0.25mm	10lb
X183X	25m	0.22mm	8lb
X184X	25m	0.20mm	6lb
X185X	25m	0.18mm	6lb
X186X	25m	0.16mm	4lb
X187X	25m	0.14mm	3lb



TIPPET DISPENSER

For leader and tippet material. Delivered with four empty, refillable spools. Small compartment for flies.

ITEM NO. _____
T89

ACCESSORIES





CLASSIC LOGO CAP



Classic logo-cap in combed twill. Flexfit® for optimized fit. Embroidered logo.

63% Polyester. 34% Cotton. 3% Spandex.

Item No.: LFC31. Size: S/M. Color: Graphite.

Item No.: LFC32. Size: L/XL. Color: Graphite.

PINSTRIPED CAP



Pinstripe design cap with original Flexfit® for optimized fit. Embroidered silver L-logo.

97% Polyester. 3% Spandex.

Item No.: LFC-29. Size: S/M. Color: Dark Grey/ White.

Item No.: LFC-30. Size: L/XL. Color: Dark Grey/ White.

SCRATCH LOGO CAP



Garment washed cotton cap with scratched L-logo print. Tuckaway adjustable strap with antique rsil buckle.

60% cotton/ 40% nylon.

Item No.: LFC-23. Size: One size fits all. Color: Olive.

ESF TRUCKER CAP



Retro style trucker cap with printed "Eat-Sleep-Fish"-logo. Adjustable plastic strap in neck.

60% cotton/ 40% nylon.

Item No.: LFC22. Size: One size fits all. Color: Brown/ Khaki.

LOGO TRUCKER CAP



Retro style trucker cap with embroidered logo. Adjustable plastic strap in neck.

60% cotton/ 40% nylon.

Item No.: LFC-21.

Size: One size fits all. Color: Moss/ Khaki.

LOGO VISOR



Visor in original Flexfit® for optimized fit. Embroidered logo.

63% Polyester. 34% Cotton. 3% Spandex.

Item No.: LFC-26. Size: S/M. Color: Navy.

Item No.: LFC-27. Size: L/XL. Color: Navy.